



Sistema / System

› **4600**

**CORREDERA ELEVABLE HI
HI LIFT AND SLIDE**

SISTEMAS DE ALUMINIO Y PVC PARA LA ARQUITECTURA
ARCHITECTURAL ALUMINIUM AND PVC SYSTEMS



VERSIÓN 20.11.01

1. PERFILES

- Se eliminan los perfiles: Cor-2870, Cor-2872, Cor-2873, Cor-2875, Cor-2876, Cor-2878, y Cor-2888.

2. ACCESORIOS

- Se elimina el accesorio: 244536.

1. PROFILES

- The following profiles are removed: Cor-2870, Cor-2872, Cor-2873, Cor-2875, Cor-2876, Cor-2878 and Cor-2888.

2. ACCESSORIES

- The following accessory is removed: 244536.

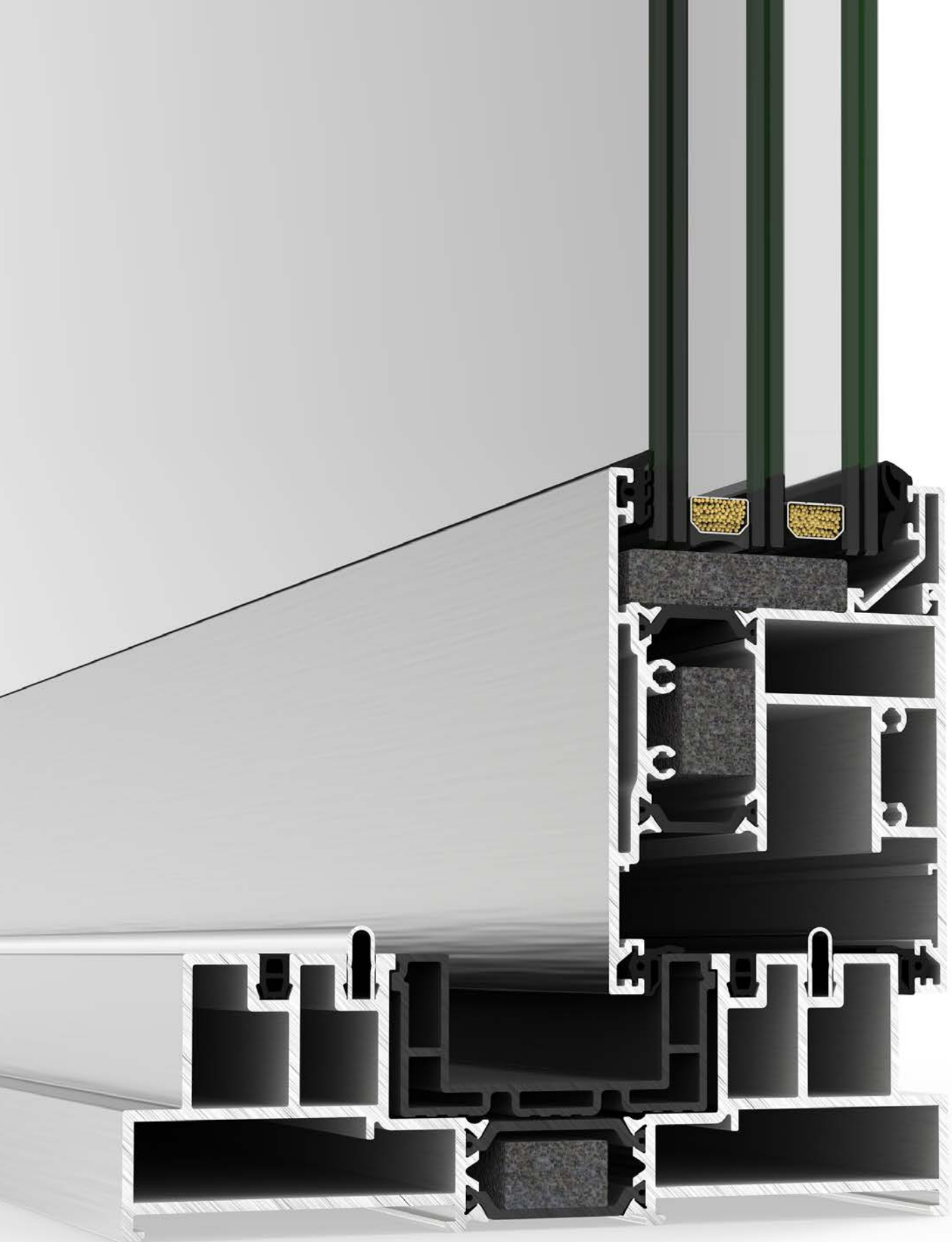
Sistema

› **4600 CORREDERA
ELEVABLE HI**

System

› **4600 HI LIFT AND
SLIDE**





Sistema

› 4600 CORREDERA ELEVABLE HI

System

› 4600 HI LIFT AND SLIDE

Información general y posibilidades de apertura General information and opening possibilities.....	4
1. Relación de perfiles / Profile list.....	15
2. Perfiles a escala / Profiles to scale.....	25
3. Relación de accesorios / Accessories list.....	59
4. Accesorios / Accessories.....	71
5. Nudos constructivos / Constructive sections.....	93
6. Acristalamiento / Glazing.....	115
7. Secciones de despiece / Cutting piece sections.....	123
8. Herraje / Hardware.....	141
a. Tablas de herraje / Hardware tables	
b. Configuración gráfica del herraje / Hardware chart	
9. Detalles de fabricación / Fabrication details.....	179
10. Mecanizados / Machining.....	223
a. Mecanizados troquel / Die machinings	
b. Mecanizados fresas / Miller machinings	
c. Otros / Others	
11. Recomendaciones de mantenimiento / Maintenance recommendations.....	247





BUREAU VERITAS
Certification

Certificación
Certification

Bureau Veritas Certification

Certifica que las actividades realizadas por:
certifies that the activities carry out by:

ALUMINIOS CORTIZO SA

CRTA PADRÓN-NOIA KM 2, 15901, PADRÓN, LA CORUÑA,
POLÍGONO INDUSTRIAL PICUSA, LA MATANZA S/N, 15900, PADRÓN, LA CORUÑA.

Indicadas a continuación, están cubiertas por la certificación concedida a la organización GRUPO CORTIZO conforme a los requisitos de la norma; subsequent activities are covered by the certification awarded by the organization GRUPO CORTIZO in accordance with the requirements of standard:

NORMA / STANDARD
ISO 9001:2015

Alcance específico de certificación:
Specific scope of certification:

EXTRUSIÓN, VENTA Y DISTRIBUCIÓN DE ALUMINIO INDUSTRIAL.
EXTRUSION, SALE AND DISTRIBUTION OF INDUSTRIAL ALUMINIUM.

Número del certificado: **ES093238-A-1** Director de Certificación / Certification Manager:
Certificate Number

Aprobación original: **12/06/2009**
Original approval date

Certificado en vigor: **12/06/2019**
Effective date

Calidad del certificado: **12/06/2027**
Certificate expiration date

ENAC
CERTIFICACIÓN
SISTEMAS DE CALIDAD

BUREAU VERITAS
Certification

Certificación
Certification

Concedida a / Awarded to:

ALUMINIOS CORTIZO SA

SEDE CENTRAL/LUGAR EXTRAMUNDI, S/N, 15901, PADRÓN, LA CORUÑA
VER ANEXO / See Annex

Bureau Veritas Certification certifica que el Sistema de Gestión ha sido auditado y encontrado conforme con los requisitos de la norma:
Bureau Veritas Certification certifies that the Management System has been audited and found to be in accordance with the requirements of standard:

NORMA / STANDARD
OHSAS 18001:2007

El Sistema de Gestión se aplica a:
Scope of certification:

PRIMERA TRANSFORMACIÓN Y EL TRATAMIENTO DEL ALUMINIO Y PVC. COMERCIALIZACIÓN Y DISTRIBUCIÓN. CONSTRUCCIÓN DE NAVES INDUSTRIALES PROPIAS Y LAS REFORMAS DE LAS MISMAS.
FIRST TRANSFORMATION AND THE ALUMINIUM AND PVC FINISHING, THE TRADING AND THE DISTRIBUTION, OWN CONSTRUCTION AND REPAIRMENT OF FACTORY PREMISES.

Número del Certificado: **ES092017-1** Director de Certificación / Certification Manager:
Certificate Number

Aprobación original: **11/06/2016**
Original approval date

Certificado en vigor: **11/06/2016**
Effective date

Calidad del certificado: **12/03/2027**
Certificate expiration date

ENAC
CERTIFICACIÓN
SISTEMAS DE CALIDAD

BUREAU VERITAS
Certification

Certificación
Certification

Concedida a / Awarded to:

ALUMINIOS CORTIZO, S.A.

LUGAR EXTRAMUNDI, SN
15901 PADRÓN
SPAIN

Bureau Veritas Certification certifica que el Sistema de Gestión ha sido auditado y encontrado conforme con los requisitos de la norma:
Bureau Veritas Certification certifies that the Management System has been audited and found to be in accordance with the requirements of standard:

NORMA / STANDARD
ISO 14001:2015

El Sistema de Gestión se aplica a:
Scope of certification:

DISEÑO DE SISTEMAS DE ALUMINIO PARA ARQUITECTURA, PRIMERA TRANSFORMACIÓN Y TRATAMIENTO SUPERFICIAL DEL ALUMINIO. COMERCIALIZACIÓN Y DISTRIBUCIÓN DE PERFILES Y SISTEMAS DE ALUMINIO Y PVC. RECOGIDA, TRANSPORTE Y VALORIZACIÓN DE METALES.
DESIGN OF ALUMINIUM SYSTEMS FOR ARCHITECTURE, FIRST PROCESSING AND ALUMINIUM SURFACE TREATMENT, ALUMINIUM AND PVC PROFILES AND SYSTEMS MARKETING AND DISTRIBUTION, COLLECTION, TRANSPORT AND RECOVERY OF METALS.

Número del Certificado: **ES079912-1** Director de Certificación / Certification Manager:
Certificate Number

Aprobación original: **15/09/2017**
Original approval date

Certificado en vigor: **15/09/2017**
Effective date

Calidad del certificado: **14/09/2029**
Certificate expiration date

ENAC
CERTIFICACIÓN
SISTEMAS DE CALIDAD

Authorization
to use the quality sign

INTERNATIONAL QUALITY LABEL FOR ANODIZING
Qualanod ARCHITECTURE

This is to certify that
ALUMINIOS CORTIZO, S.A.U.
Carretera Padrón a Noya, Km. 2
Extramundi, s/n
ES - 15901 Padrón (A Coruña)

Licence number: 1027

is authorized to use the quality sign which is shown above, according to the regulations for the use of the quality label for ARCHITECTURAL ANODIZING as described in the current edition of the Specifications for the QUALANOD quality label for sulfuric acid-based anodizing of aluminum (Edition 01.01.2020). Architectural anodizing is one of the four types of anodizing covered by the Specifications.

Date of issue of the licence: 01.04.1992
Period of validity of the licence: until 31.12.2020

Zurich, 19 November 2019

QUALANOD **CERTIFICATION BODY**

Remco Baartmans
President

Matthias Lanz
General Secretary

Mailing address:
QUALANOD, P.O. Box 1507, CH-8027 Zurich

Domicile:
QUALANOD
c/o ARCO Association Management AG
(certification body)
Taldstrasse 42, CH-8002 Zurich

Website: www.qualanod.net
E-Mail: info@qualanod.net // Phone: +41 (0)43 355 09 77 / 81

CERTIFICATE
for a COATING APPLICATOR

QUALICOAT
BRAND

hereby authorises

ALUMINIOS CORTIZO, S.A.
Ctra. de Padrón a Noya, Km 2
Extramundi s/n
15901 Padrón (A Coruña)
Spain

to use the quality label in conformity with the
16th Edition of the QUALICOAT Specifications valid from 1 July 2019

Licence No.: 402

Date of Granting: 27.06.1988

Valid until: 31.12.2020

Zurich, 1 January 2020

QUALICOAT

Mohammed C. Panam
President

Sue C. C. Paredi
Managing Director

QUALICOAT | Todstrasse 48, 8002 Zurich, Switzerland | www.qualicoat.net

CERTIFICATE
for a DECORATOR

QUALIDECO

hereby authorises

ALUMINIOS CORTIZO, S.A.
Ctra. de Padrón a Noya, Km. 2 - Extramundi s/n
15900 Padrón (A Coruña)
Spain

to use the quality label in conformity with the
QUALIDECO Specifications 4th Edition valid from 1. October 2019

Licence No.: ES-0014F

Date of Granting: 20.05.2010

Valid until: 31.12.2020

Zurich, 20 January 2020

QUALICOAT

Mohammed C. Panam
President

Sue C. C. Paredi
Managing Director

QUALICOAT | Todstrasse 48, 8002 Zurich, Switzerland | www.qualicoat.net



Muestra ensayada por / Sample tested by
ALUMINIOS CORTIZO S.A.U.



Transmitancia / Transmittance

$U_w \geq 0,9$ (W/m²K)

Consultar tipología, dimensión y vidrio.
Consult typology, dimensions and glass.

CTE - Apto para zonas climáticas*: α A B C D E

*En función de la transmitancia del vidrio.

Aislamiento acústico / Accoustic insulation

Máximo acristalamiento
Maximum glazing **55 mm**

Máximo aislamiento acústico
Maximum accoustic insulation **Rw = 43 dB**

Secciones Sections

Marco
Frame 251 mm tricarril / 3 rails
Hoja / Sash 70 mm

Espesor perfilería Profile thickness

Puerta
Door 2,0 mm

Longitud varilla poliamida
Polyamide strip length Marco / Frame 35 mm
Hoja / Sash 24 mm

Categorías alcanzadas en banco de ensayos

Categories achieved at test centre

Permeabilidad al aire / Air permeability
(UNE-EN 12207): Clase / Class 4

Estanqueidad al agua / Water tightness
(UNE-EN 12208): Clase / Class 9A

Resistencia al viento / Wind resistance
(UNE-EN 12210): Clase / Class C5

Ensayo de referencia ventana 4,0 x 2,4 m, 2 hojas.
Reference test 4.0 x 2.4 m, 2 sashes.

Acabados / Finishes

Posibilidad bicolor / Possibility of dual colour
Lacado colores (RAL, moteados y rugosos) / Colour powder coating (RAL, mottled & rough)
Lacado imitación madera / Wood effect powder coating
Lacado antibacteriano / Anti-bacterial powder coating
Anodizado / Anodized

Posibilidades de apertura Opening possibilities

Corredera de 2, 3, 4 y 6 hojas.
Posibilidad monocarril (hoja + fijo).
Posibilidad tricarril.
Posibilidad de apertura a 90° sin perteluz.

Sliding of 2, 3, 4 & 6 sashes.
Possibility of 1 rail (1 sash + 1 fixed light).
Possibility of 3 rails.
Possibility of opening at 90° without mullion.

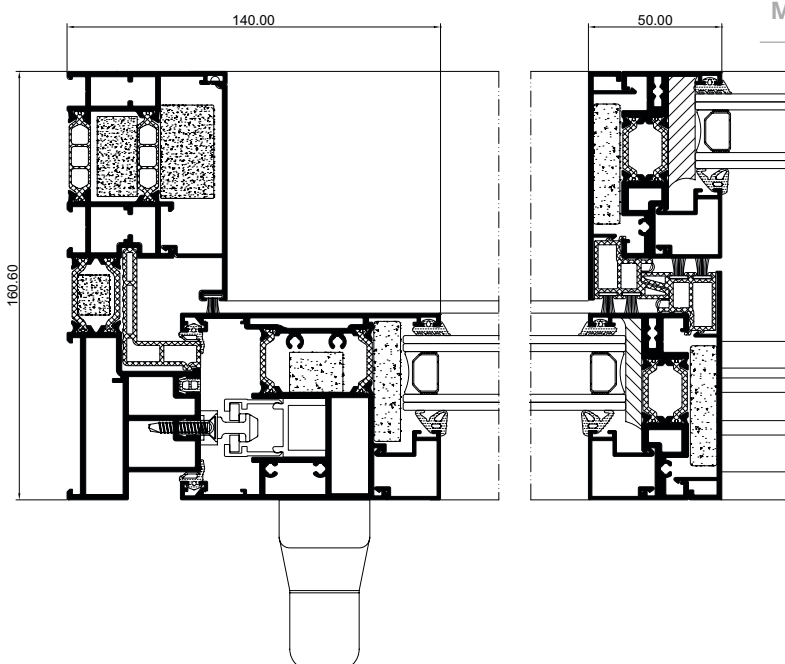
Dimensiones máximas/hoja Maximum dimensions/sash

Ancho / Width (L) = 3300 mm

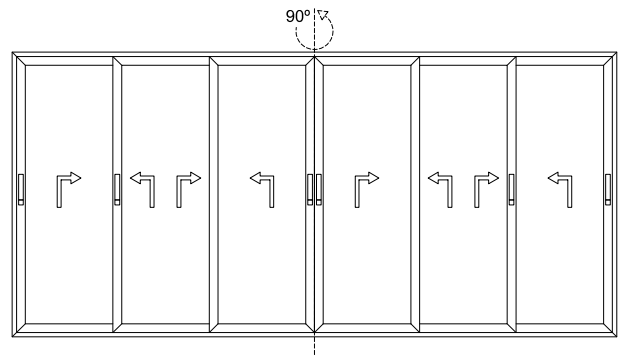
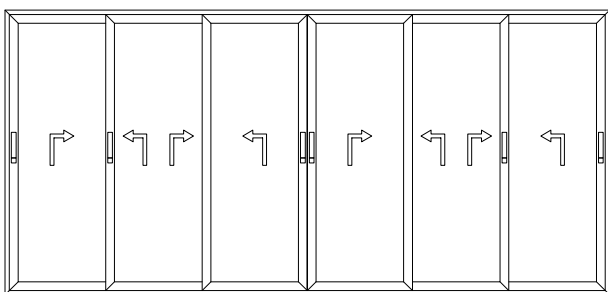
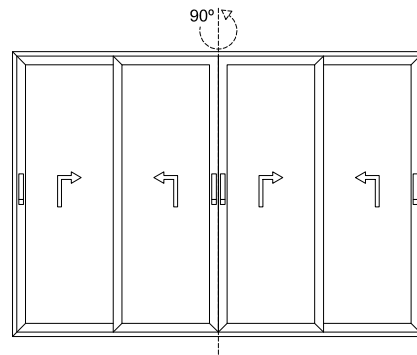
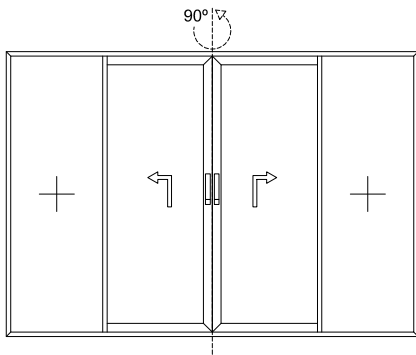
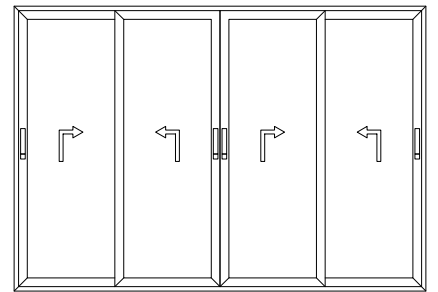
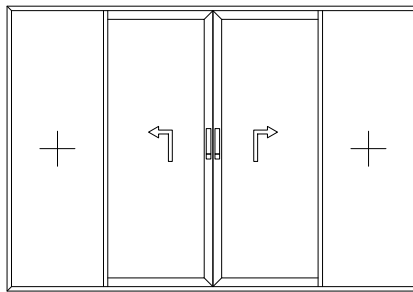
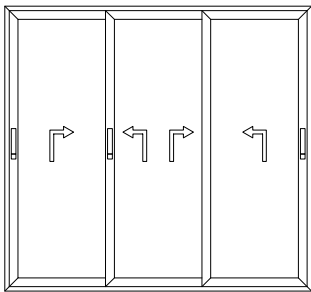
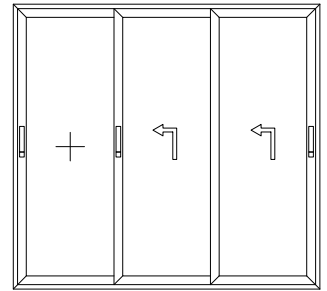
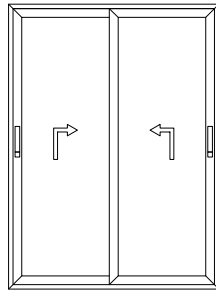
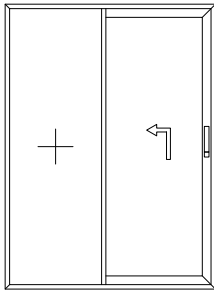
Alto / Height (H) = 3300 mm

Consultar peso y dimensiones máximas según tipología.
Consult maximum weight and dimensions in accordance to typology.

Peso máximo/hoja Maximum weight/sash 400 Kg.

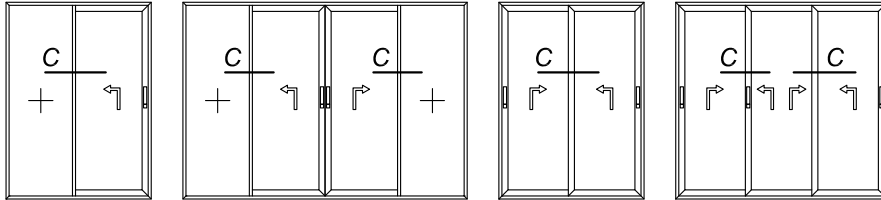


Diego Piñeiro Janeiro
Director de I+D+i / R&D Manager





DIMENSIONES MÁXIMAS EN FUNCIÓN DEL NUDO CENTRAL
MAXIMUM DIMENSIONS ACCORDING TO MIDDLE SECTION

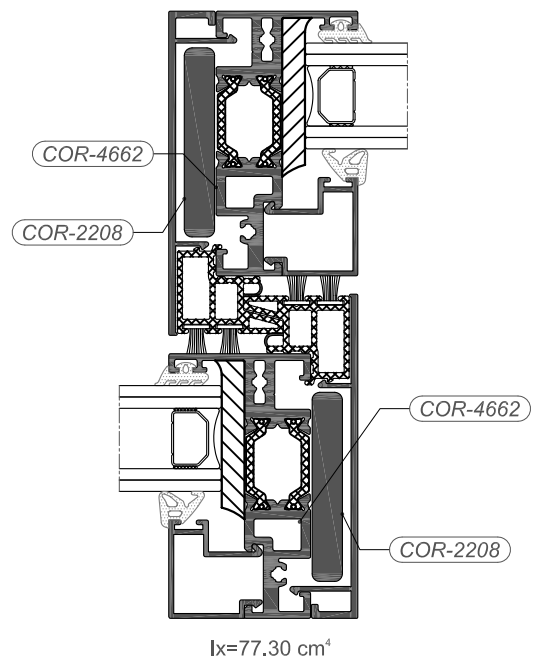
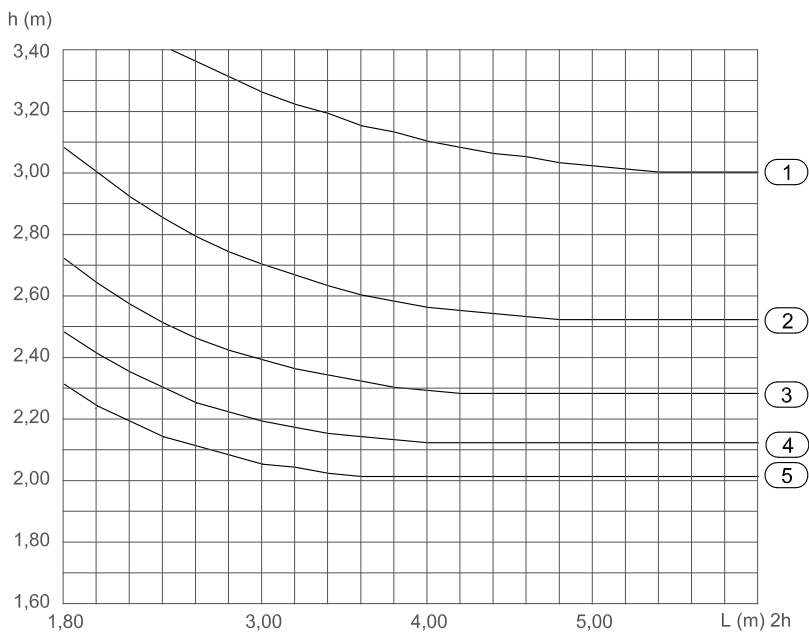
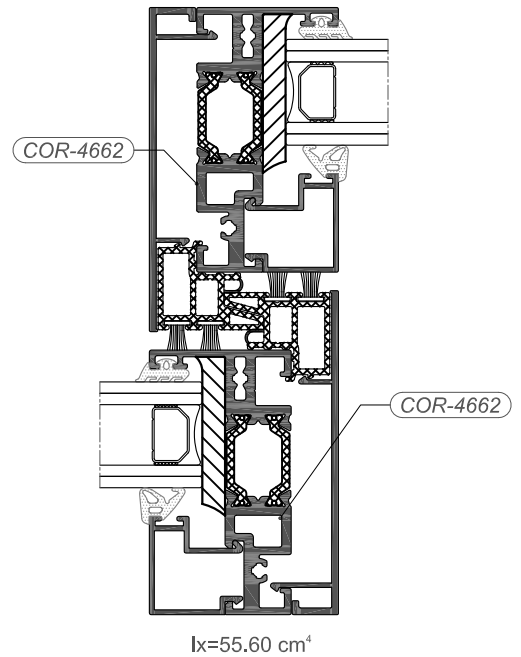
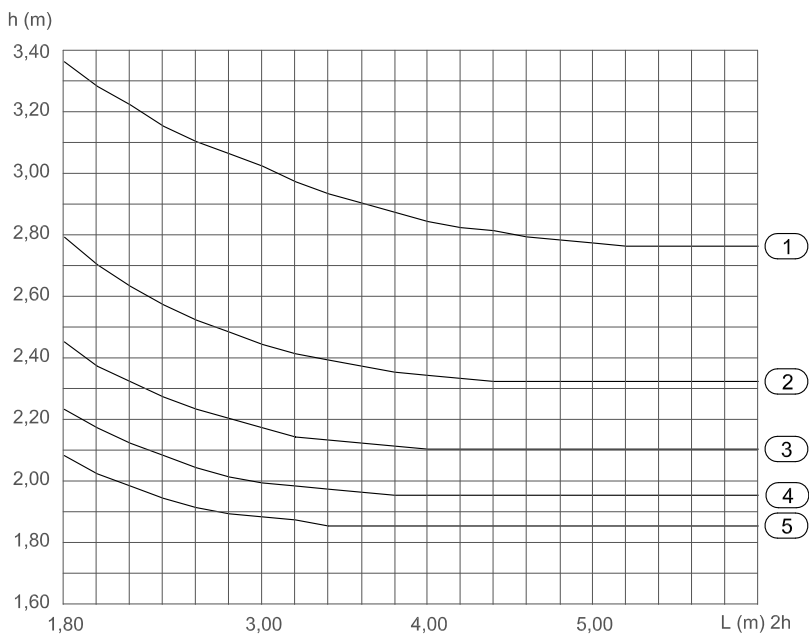


CARGA DE VIENTO / WINDLOAD

Flèche max. H/200 ó 15 mm

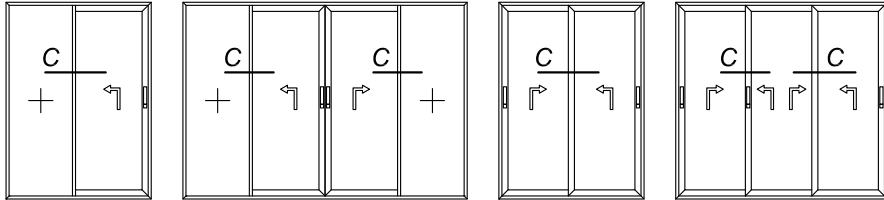
Max. deflection H/200 or 15 mm

- ① - 400 Pa - 93 km/h
- ② - 800 Pa - 131 km/h
- ③ - 1200 Pa - 161 km/h
- ④ - 1600 Pa - 186 km/h
- ⑤ - 2000 Pa - 208 km/h





DIMENSIONES MÁXIMAS EN FUNCIÓN DEL NUDO CENTRAL
 MAXIMUM DIMENSIONS ACCORDING TO MIDDLE SECTION

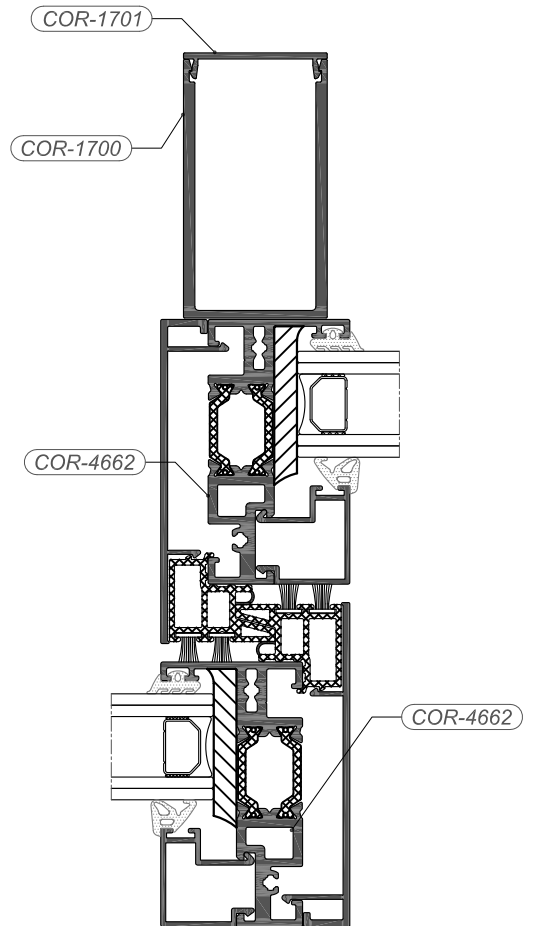
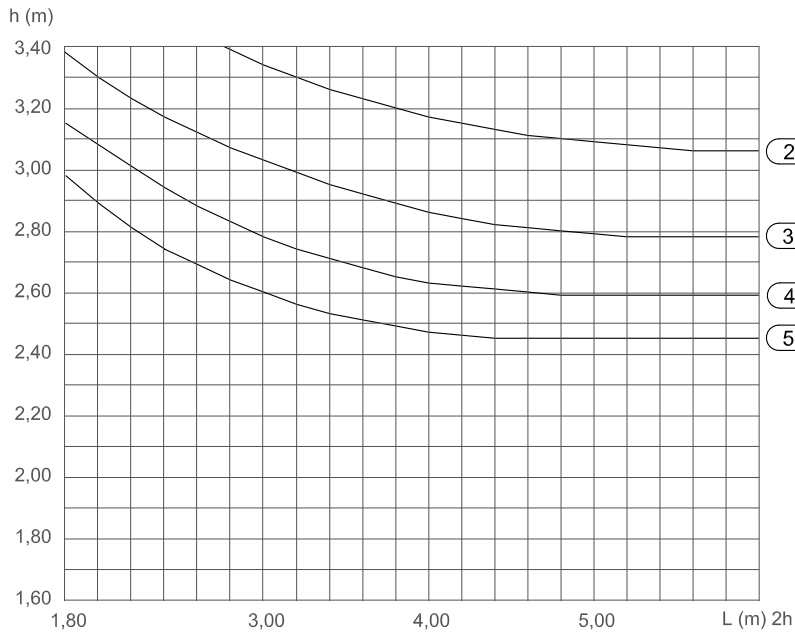


CARGA DE VIENTO / WINDLOAD

Flecha max. $H/200$ ó 15 mm

Max. deflection $H/200$ or 15 mm

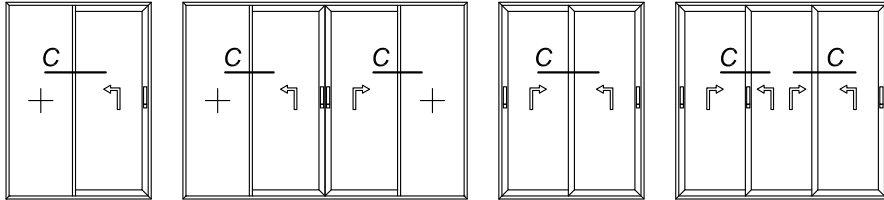
- ① - 400 Pa - 93 km/h
- ② - 800 Pa - 131 km/h
- ③ - 1200 Pa - 161 km/h
- ④ - 1600 Pa - 186 km/h
- ⑤ - 2000 Pa - 208 km/h



$I_x = 170.40 \text{ cm}^4$



DIMENSIONES MÁXIMAS EN FUNCIÓN DEL NUDO CENTRAL
MAXIMUM DIMENSIONS ACCORDING TO MIDDLE SECTION

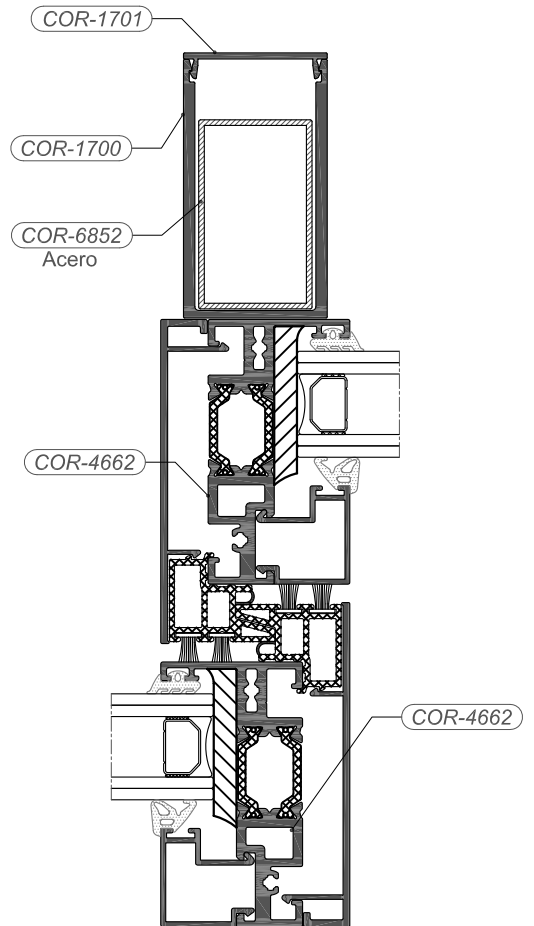
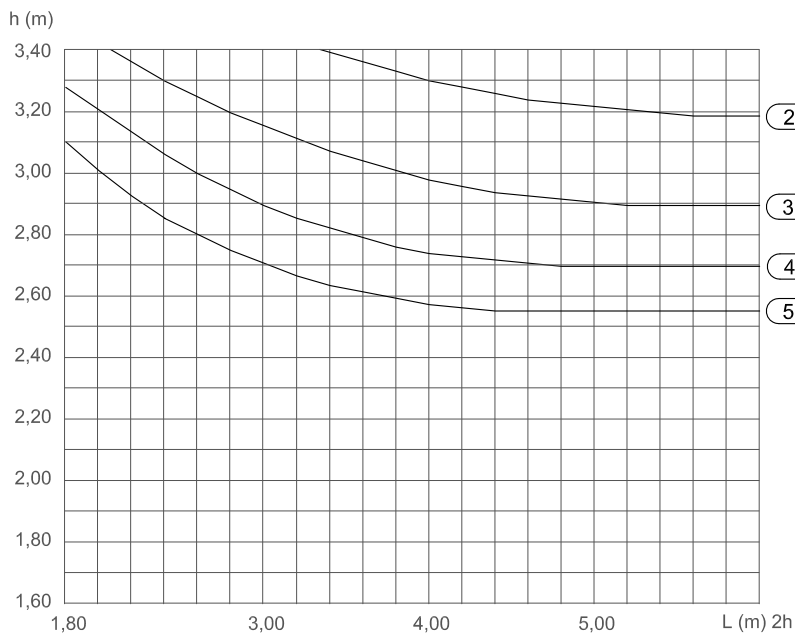


CARGA DE VIENTO / WINDLOAD

Flecha max. $H/200$ ó 15 mm

Max. deflection $H/200$ or 15 mm

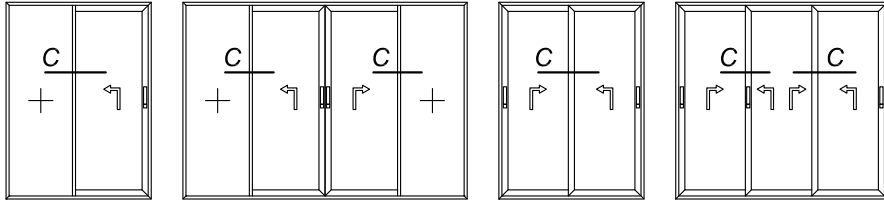
- ① - 400 Pa - 93 km/h
- ② - 800 Pa - 131 km/h
- ③ - 1200 Pa - 161 km/h
- ④ - 1600 Pa - 186 km/h
- ⑤ - 2000 Pa - 208 km/h



$I_x=201.70 \text{ cm}^4$



DIMENSIONES MÁXIMAS EN FUNCIÓN DEL NUDO CENTRAL
 MAXIMUM DIMENSIONS ACCORDING TO MIDDLE SECTION

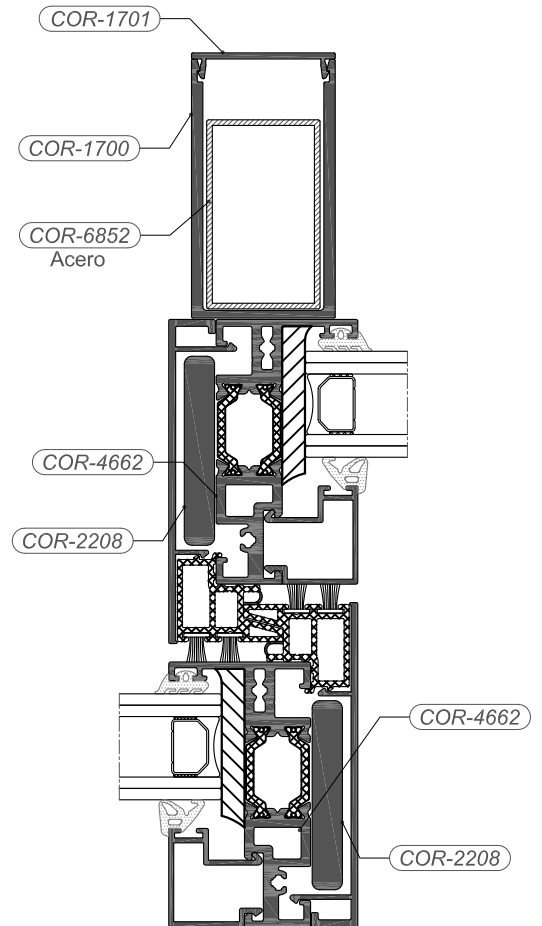
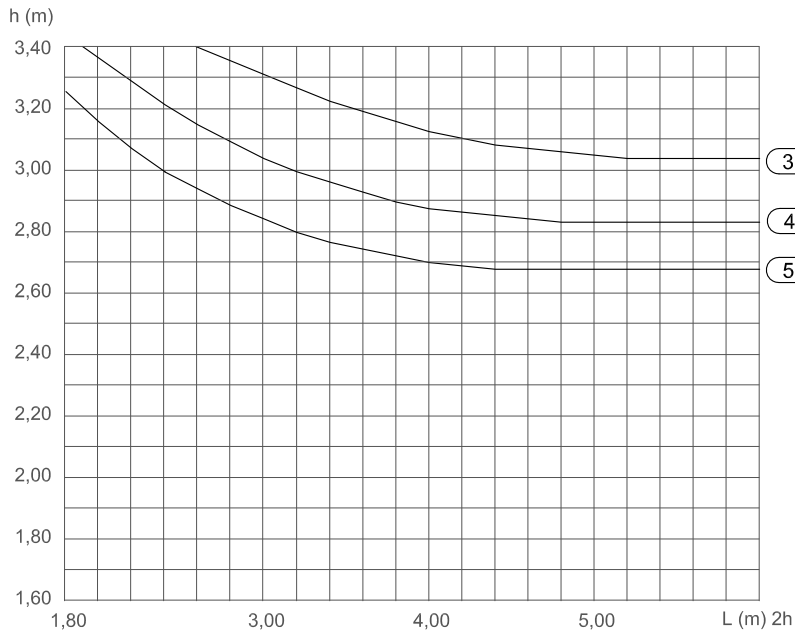


CARGA DE VIENTO / WINDLOAD

Flèche max. $H/200$ ó 15 mm

Max. deflection $H/200$ or 15 mm

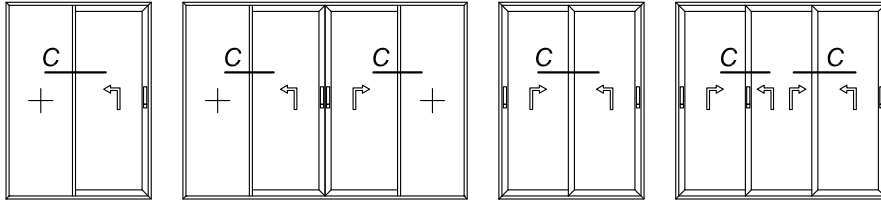
- ① - 400 Pa - 93 km/h
- ② - 800 Pa - 131 km/h
- ③ - 1200 Pa - 161 km/h
- ④ - 1600 Pa - 186 km/h
- ⑤ - 2000 Pa - 208 km/h



$I_x=245.00 \text{ cm}^4$



DIMENSIONES MÁXIMAS EN FUNCIÓN DEL NUDO CENTRAL
MAXIMUM DIMENSIONS ACCORDING TO MIDDLE SECTION

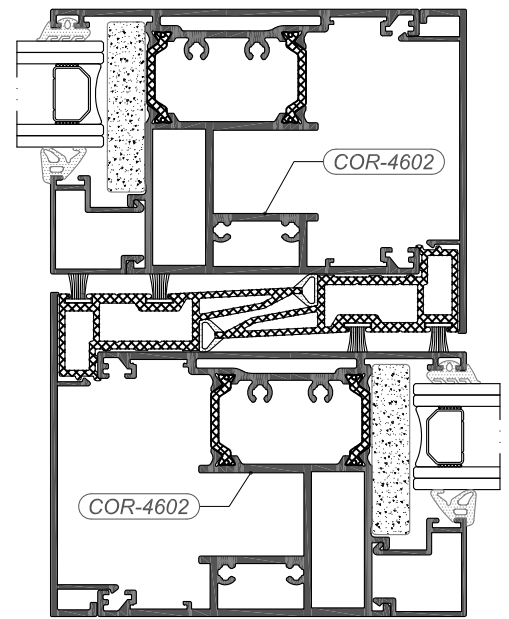
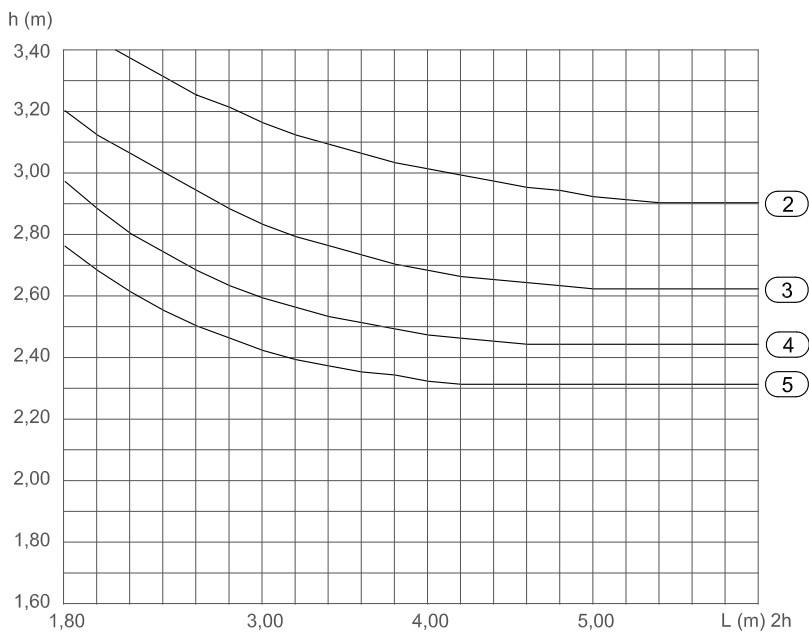


CARGA DE VIENTO / WINDLOAD

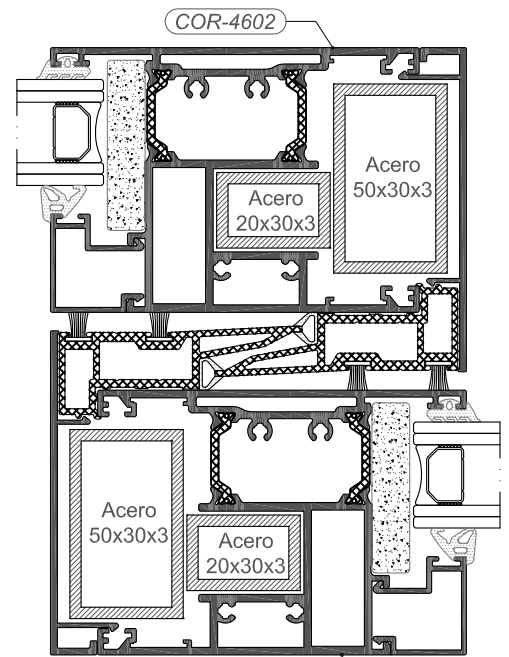
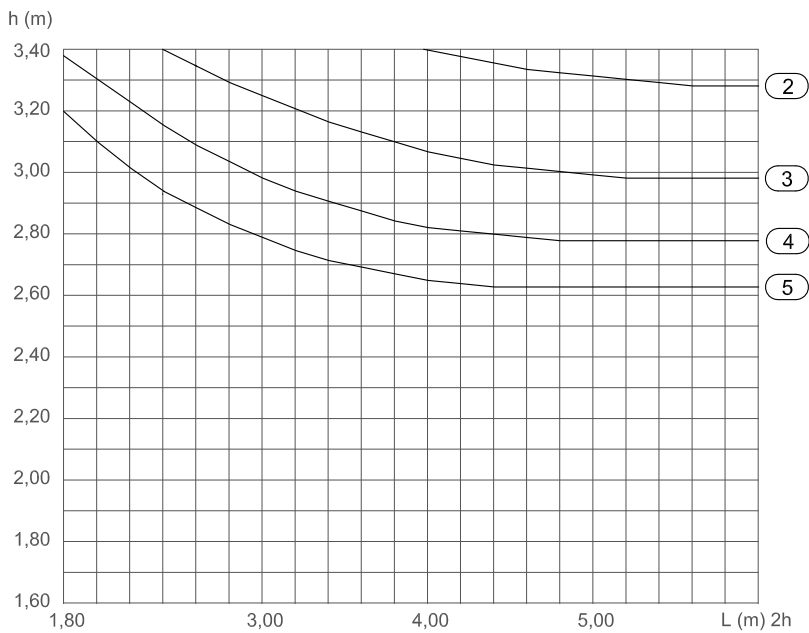
Flecha max. $H/200$ ó 15 mm

Max. deflection $H/200$ or 15 mm

- ① - 400 Pa - 93 km/h
- ② - 800 Pa - 131 km/h
- ③ - 1200 Pa - 161 km/h
- ④ - 1600 Pa - 186 km/h
- ⑤ - 2000 Pa - 208 km/h



$I_x = 135.60 \text{ cm}^4$



$I_x = 229.40 \text{ cm}^4$